



ANNIVERSARY 3.0



ANNIVERSARY 3.0 Model number:

3 beds • 2 baths • 1580 sq.ft. • 28' width • 60' depth

Our home building facilities invest in continuous product and process improvements. Plans, dimensions, features, materials, specifications and availability are subject to change without notice or obligation. Renderings and floor plans are representative likenesses of our homes and may differ from the actual homes. We invite you to tour a Home Center near you and inspect the highest value in quality housing available or call (903) 887-2114 to speak with a Home Consultant. Copyright 2017, CMH. All rights reserved.

<https://www.claytonhomesofmabank.com>

**CLAYTON HOMES-
MABANK**

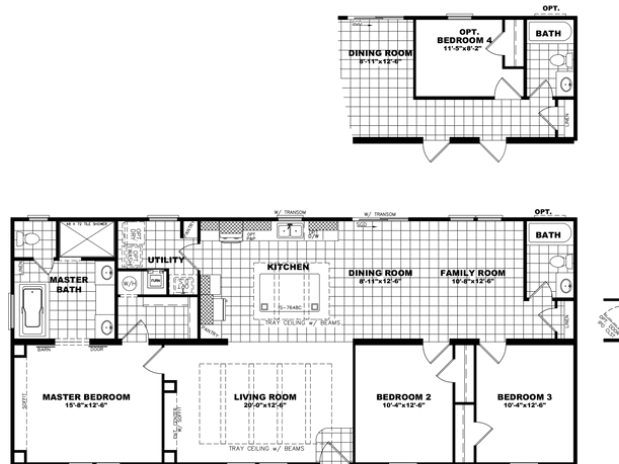
**BOX 10050 COUNTY ROAD
4005
MABANK, TX 75147**

**Monday - Thursday: 9am to 6pm
Friday: 9am to 6pm
Saturday: 9am to 5pm
Sunday: Closed**

(903) 887-2114



ANNIVERSARY 3.0



ANNIVERSARY 3.0

Model #: ANN28603A
Drawing #:
32M454

ANNIVERSARY 3.0 Model number:

3 beds • 2 baths • 1580 sq.ft. • 28' width • 60' depth

Our home building facilities invest in continuous product and process improvements. Plans, dimensions, features, materials, specifications and availability are subject to change without notice or obligation. Renderings and floor plans are representative likenesses of our homes and may differ from the actual homes. We invite you to tour a Home Center near you and inspect the highest value in quality housing available or call (903) 887-2114 to speak with a Home Consultant. Copyright 2017, CMH. All rights reserved.

<https://www.claytonhomesofmabank.com>

CLAYTON HOMES-
MABANK

BOX 10050 COUNTY ROAD
4005
MABANK, TX 75147

Monday - Thursday: 9am to 6pm
Friday: 9am to 6pm
Saturday: 9am to 5pm
Sunday: Closed

(903) 887-2114